

**INSTRUMENT  
APPROACH  
CHART - ICAO**

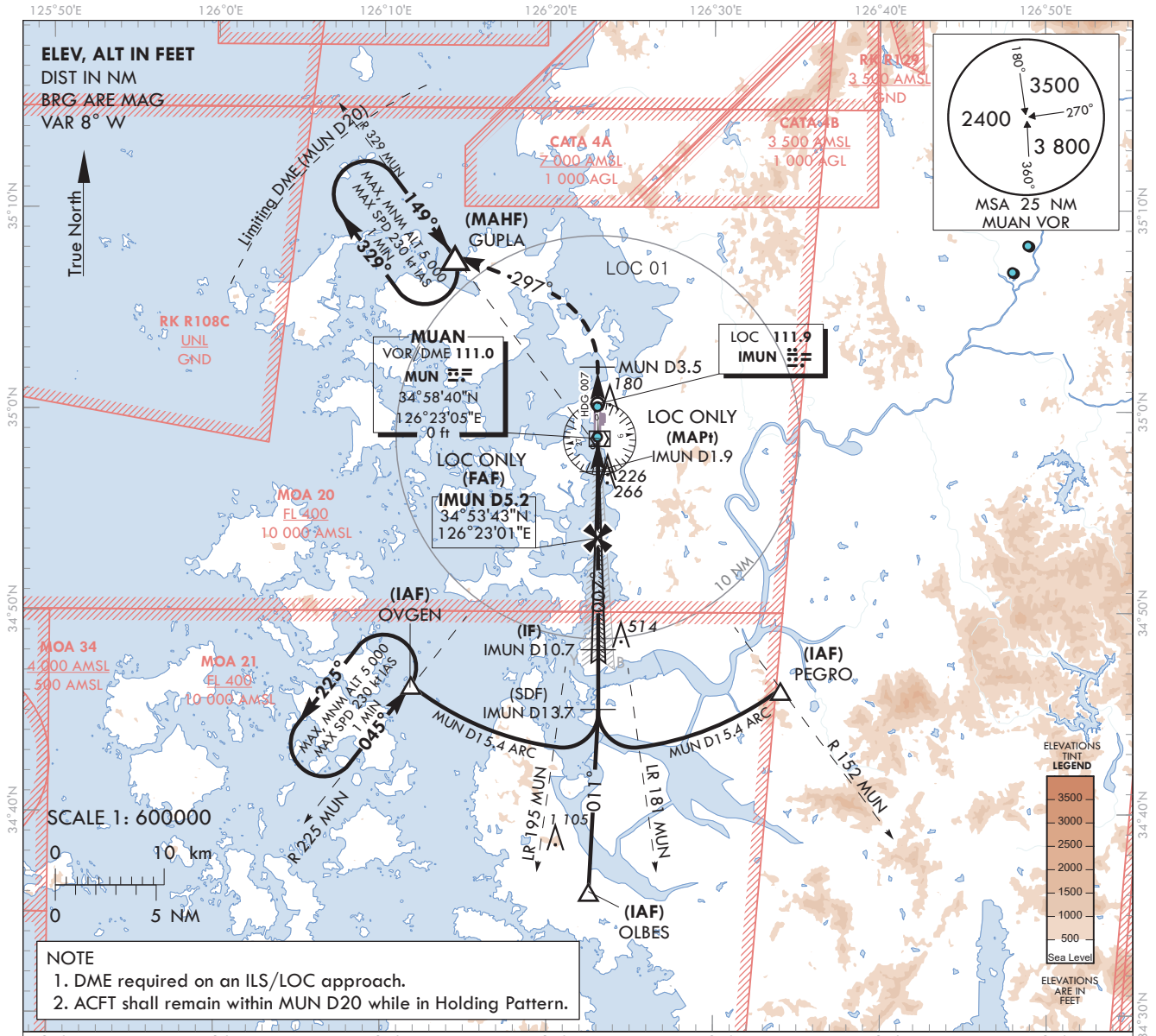
**AERODROME ELEV 51 ft**  
HEIGHTS RELATED TO  
THR RWY 01 - ELEV 32 ft

GWANGJU APP	120.475	130.0
	228.9	265.5
MUAN TWR	118.25	118.85

**MUAN/Muan Intl(RKJB)**

**ILS Y or LOC Y RWY 01**

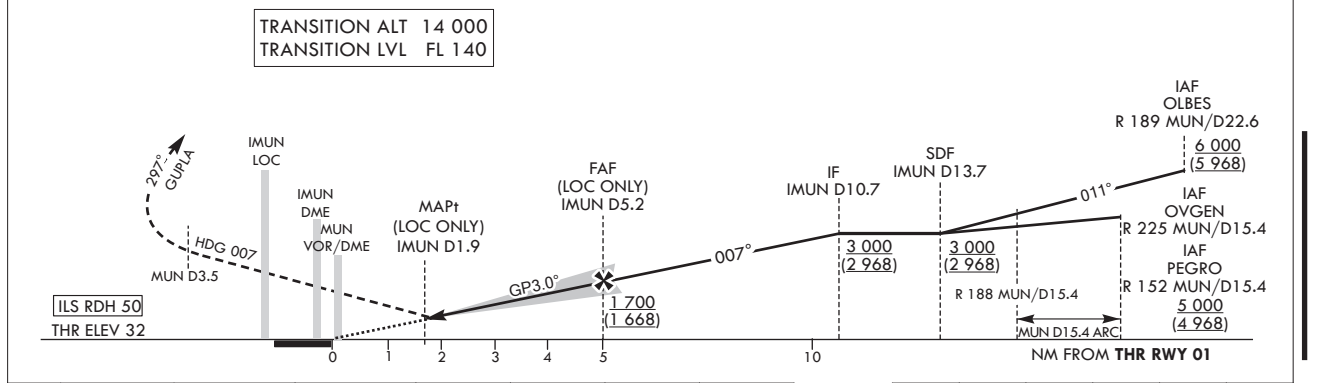
Note : Approach under ICAO Flight Procedure.



RECOMMENDED PROFILE(LOC ONLY)	DME IMUN	5	4	3	2
Final Approach Gradient 5.31%, 323 ft/NM	ALT(HGT)	1 645 (1 613)	1 322 (1 290)	999 (967)	660 (628)

**MISSED APPROACH**

Climb on HDG 007° to MUN D3.5, then turn left HDG 297° to GUPLA and Hold at 5 000 ft.



CATEGORY	DA(DH)/MDA(MDH)	A	B	C	D	Knots	Rate of descent					
							60	90	120	150	180	
STA	CAT-I	FULL	232 (200)	RVR 550 m, VIS 800 m			V/V fpm	318	478	637	796	955
		ALS INOP		1 200 m								
	LOC	FULL	660 (628)	2 600 m			* Timing Not authorized for defining MAPt. * Circling Not authorized.					
		ALS INOP		3 300 m								

Change : Information of profile view.

MUAN/Muan Intl(RKJB)  
ILS Y or LOC Y RWY 01

AERONAUTICAL DATA TABULATION

ILS Y or LOC Y Approach to RWY 01 from OVGEN, OLBES or PEGRO			
Fix/point		Coordinates	
OVGEN(IAF)	R 225 MUN /15.4 NM MUN	34°46'22.2"N	126°11'47.9"E
OLBES(IAF)	R 189 MUN /22.5 NM MUN	34°36'08.1"N	126°22'32.0"E
PEGRO(IAF)	R 152 MUN /15.4 NM MUN	34°46'09.0"N	126°34'02.1"E
D13.7 IMUN(SDF)	BRG 7.10°/13.7 NM IMUN	34°45'11.5"N	126°23'04.1"E
D10.7 IMUN(IF)	BRG 7.10°/10.7 NM IMUN	34°48'10.9"N	126°23'03.3"E
D5.2 IMUN(FAF LOC ONLY)	BRG 7.10°/5.2 NM IMUN	34°53'42.6"N	126°23'00.5"E
D1.9 IMUN(MAPt LOC ONLY)	BRG 7.10°/1.9 NM IMUN	34°56'59.1"N	126°22'59.2"E
MUN VOR/DME		34°58'40.0"N	126°23'05.4"E
THR RWY 01	Final approach descent angle 3.04° (LOC ONLY)	34°58'43.64"N	126°22'58.45"E
IMUN DME		34°58'53.2"N	126°22'53.8"E
IMUN LOC		35°00'23.1"N	126°22'57.8"E
D3.5 MUN	HDG 007		-
GUPLA	HDG 297/11.5 NM MUN	35°07'37.8"N	126°14'18.1"E

**INSTRUMENT  
APPROACH  
CHART - ICAO**

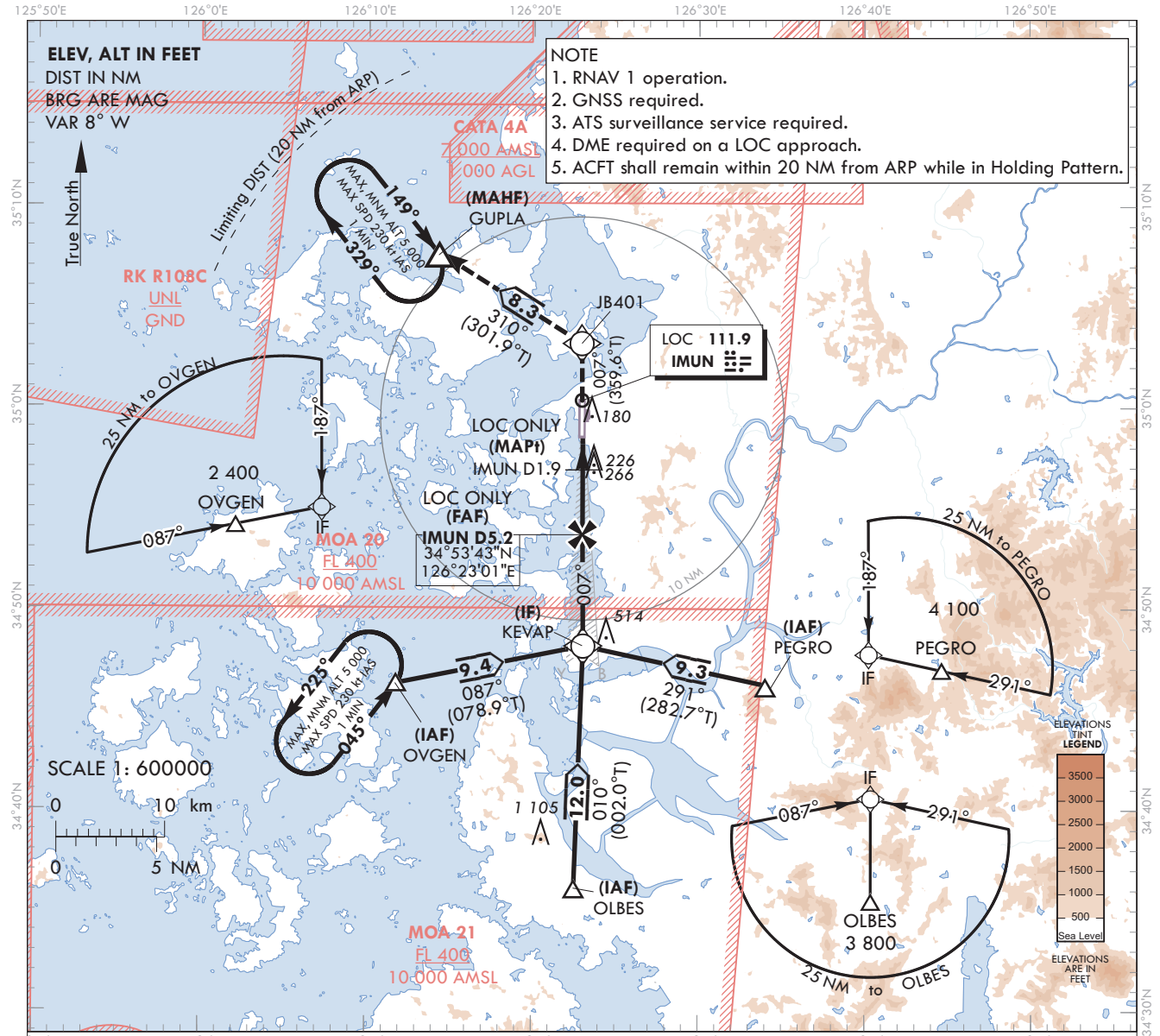
**AERODROME ELEV 51 ft**  
HEIGHTS RELATED TO  
THR RWY 01 - ELEV 32 ft

GWANGJU APP	120.475	130.0
MUAN TWR	228.9	265.5
MUAN TWR	118.25	118.85

**MUAN/Muan Intl(RKJB)**

**ILS Z or LOC Z RWY 01**

Note : Approach under ICAO Flight Procedure.

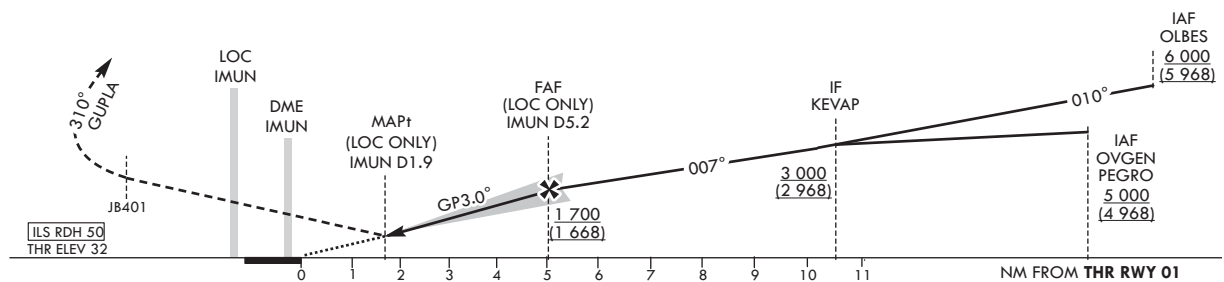


- NOTE**
1. RNAV 1 operation.
  2. GNSS required.
  3. ATS surveillance service required.
  4. DME required on a LOC approach.
  5. ACFT shall remain within 20 NM from ARP while in Holding Pattern.

RECOMMENDED PROFILE(LOC ONLY)	DME IMUN	5	4	3	2
Final Approach Gradient 5.31%, 323 ft/NM	ALT(HGT)	1 645 (1 613)	1 322 (1 290)	999 (967)	660 (628)

TRANSITION ALT 14 000  
TRANSITION LVL FL 140

**MISSED APPROACH**  
Climb to 5 000 ft on track of 007° to JB401, then LEFT turn on track of 310° to GUPLA. Hold as published.



CATEGORY	DA(DH)/MDA(MDH)	A	B	C	D	Knots							
						60	90	120	150	180			
STA	CAT-I	FULL	232	RVR 550 m, VIS 800 m			Rate of descent	V/V fpm	318	478	637	796	955
		ALS INOP	(200)	1 200 m									
STA	LOC	FULL	660	2 600 m			* Timing Not authorized for defining MAPt. * Circling Not authorized.						
		ALS INOP	(628)	3 300 m									

Change : Information of profile view.

MUAN/Muan Intl(RKJB)  
ILS Z or LOC Z RWY 01

AERONAUTICAL DATA TABULATION

ILS Z or LOC Z Approach to RWY 01 from OVGEN, OLBES or PEGRO		
Fix/point		Coordinates
OVGEN(IAF)		34°46'22.2"N 126°11'47.9"E
OLBES(IAF)		34°36'08.1"N 126°22'32.0"E
PEGRO(IAF)		34°46'09.0"N 126°34'02.1"E
KEVAP(IF)	BRG 7.10°/10.69 NM IMUN	34°48'10.9"N 126°23'03.3"E
D5.2 IMUN(FAF LOC ONLY)	BRG 7.10°/5.17 NM IMUN	34°53'42.6"N 126°23'00.5"E
D1.9 IMUN(MAPt LOC ONLY)	BRG 7.10°/1.90 NM IMUN	34°56'59.1"N 126°22'59.2"E
THR RWY 01	Final approach descent angle 3.04°(LOC ONLY)	34°58'43.64"N 126°22'58.45"E
IMUN DME		34°58'53.2"N 126°22'53.8"E
IMUN LOC		35°00'23.1"N 126°22'57.8"E
JB401		35°03'13.1"N 126°22'56.4"E
GUPLA		35°07'37.8"N 126°14'18.1"E

**INSTRUMENT  
APPROACH  
CHART - ICAO**

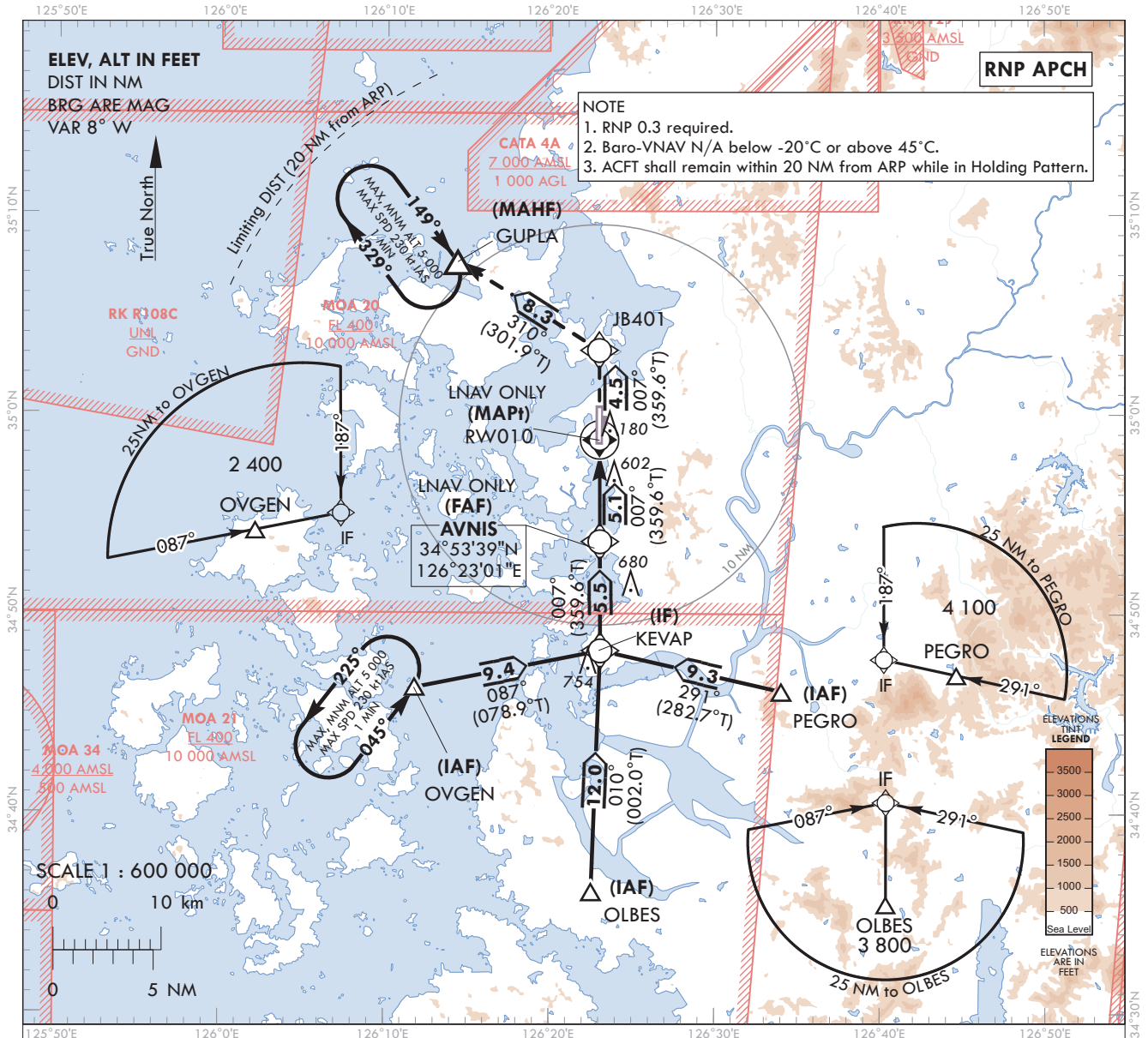
**AERODROME ELEV 51 ft**  
HEIGHTS RELATED TO  
THR RWY 01 - ELEV 32 ft

GWANGJU APP	120.475	130.0
	228.9	265.5
MUAN TWR	118.25	118.85

**MUAN/Muan Intl(RKJB)**

**RNP RWY 01**

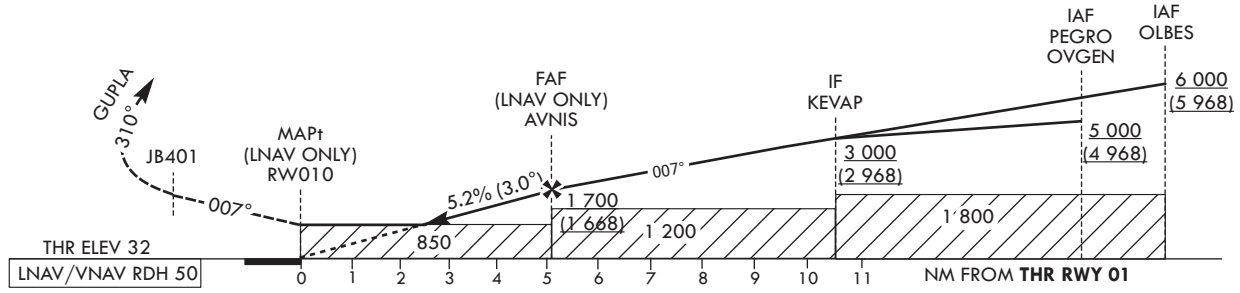
Note : Approach under ICAO Flight Procedure.



**NOTE**  
1. RNP 0.3 required.  
2. Baro-VNAV N/A below -20°C or above 45°C.  
3. ACFT shall remain within 20 NM from ARP while in Holding Pattern.

TRANSITION ALT 14 000  
TRANSITION LVL FL 140

**MISSED APPROACH**  
Climb to 5 000 ft on track of 007° to JB401,  
then LEFT turn on track of 310° to GUPLA.  
Hold as published.



CATEGORY	DA(H)/MDA(H)	A	B	C	D	Rate of descent						
						Knots	60	90	120	150	180	
STA	LNAV/VNAV	FULL	790	2 700 m			V/V fpm	319	478	638	797	957
		ALS INOP	(758)	3 500 m								
	LNAV	FULL	850	3 100 m								
		ALS INOP	(818)	3 800 m								

Change : Information of profile view.

MUAN/Muan Intl(RKJB)  
RNP RWY 01  
HOLDING PROCEDURE

AERONAUTICAL DATA TABULATION

Instrument Approach Procedure Coding Tables

RNP RWY 01 - via OVGEN to KEVAPI(IF)

Serial Number	Path Descriptor	Waypoint Identifier	Fly-over	Course/Track °M(°T)	Distance (NM)	Turn direction	Altitude (ft)	Speed (kt)	Coordinates	VPA/RDH	Navigation specification	Remarks
001	IF	OVGEN	-	-	-	-	+5 000	-	34°46'22.2"N 126°11'47.9"E	-	RNP APCH	IAF
002	TF	KEVAP	-	087(078.9)	9.4	-	+3 000	-	34°48'10.9"N 126°23'03.3"E	-	RNP APCH	IF

RNP RWY 01 - via OLBES to KEVAPI(IF)

Serial Number	Path Descriptor	Waypoint Identifier	Fly-over	Course/Track °M(°T)	Distance (NM)	Turn direction	Altitude (ft)	Speed (kt)	Coordinates	VPA/RDH	Navigation specification	Remarks
001	IF	OLBES	-	-	-	-	+6 000	-	34°36'08.1"N 126°22'32.0"E	-	RNP APCH	IAF
002	TF	KEVAP	-	010(002.0)	12.0	-	+3 000	-	34°48'10.9"N 126°23'03.3"E	-	RNP APCH	IF

RNP RWY 01 - via PEGRO to KEVAPI(IF)

Serial Number	Path Descriptor	Waypoint Identifier	Fly-over	Course/Track °M(°T)	Distance (NM)	Turn direction	Altitude (ft)	Speed (kt)	Coordinates	VPA/RDH	Navigation specification	Remarks
001	IF	PEGRO	-	-	-	-	+5 000	-	34°46'09.0"N 126°34'02.1"E	-	RNP APCH	IAF
002	TF	KEVAP	-	291(282.7)	9.3	-	+3 000	-	34°48'10.9"N 126°23'03.3"E	-	RNP APCH	IF

RNP RWY 01 - via KEVAPI(IF) to GUPLA(MAHF)

Serial Number	Path Descriptor	Waypoint Identifier	Fly-over	Course/Track °M(°T)	Distance (NM)	Turn direction	Altitude (ft)	Speed (kt)	Coordinates	VPA/RDH	Navigation specification	Remarks
002	TF	KEVAP	-	-	-	-	+3 000	-	34°48'10.9"N 126°23'03.3"E	-	RNP APCH	IF
003	TF	AVNIS	-	007(359.6)	5.5	-	+1 700	-	34°53'38.8"N 126°23'00.8"E	-	RNP APCH	FAF
004	TF	RW010	Y	007(359.6)	5.1	-	+850	-	34°58'43.64"N 126°22'58.45"E	-3.00/50	RNP APCH	MAPt
005	TF	JB401	-	007(359.6)	4.5	-	-	-	35°03'13.1"N 126°22'56.4"E	-	RNP APCH	-
006	TF	GUPLA	Y	310(301.9)	8.3	-	-	-	35°07'37.8"N 126°14'18.1"E	-	RNP APCH	-
007	HM	GUPLA	Y	149(141.1)	-	R	@5 000	-230	35°07'37.8"N 126°14'18.1"E	-	RNP APCH	1 MIN (Outbound timing)

HOLDING PROCEDURE

Holding Identification	Path Descriptor	Waypoint Identifier	Fly-over	Course/Track °M(°T)	Time (min)	Turn direction	Altitude (ft)	Speed (kt)	Coordinates	VPA/RDH	Navigation specification	Remarks
RNP RWY 01	HM	OVGEN	Y	045 (037.0)	1	L	@5 000	-230	34°46'22.2"N 126°11'47.9"E	-	RNAV 1	-

**INSTRUMENT  
APPROACH  
CHART - ICAO**

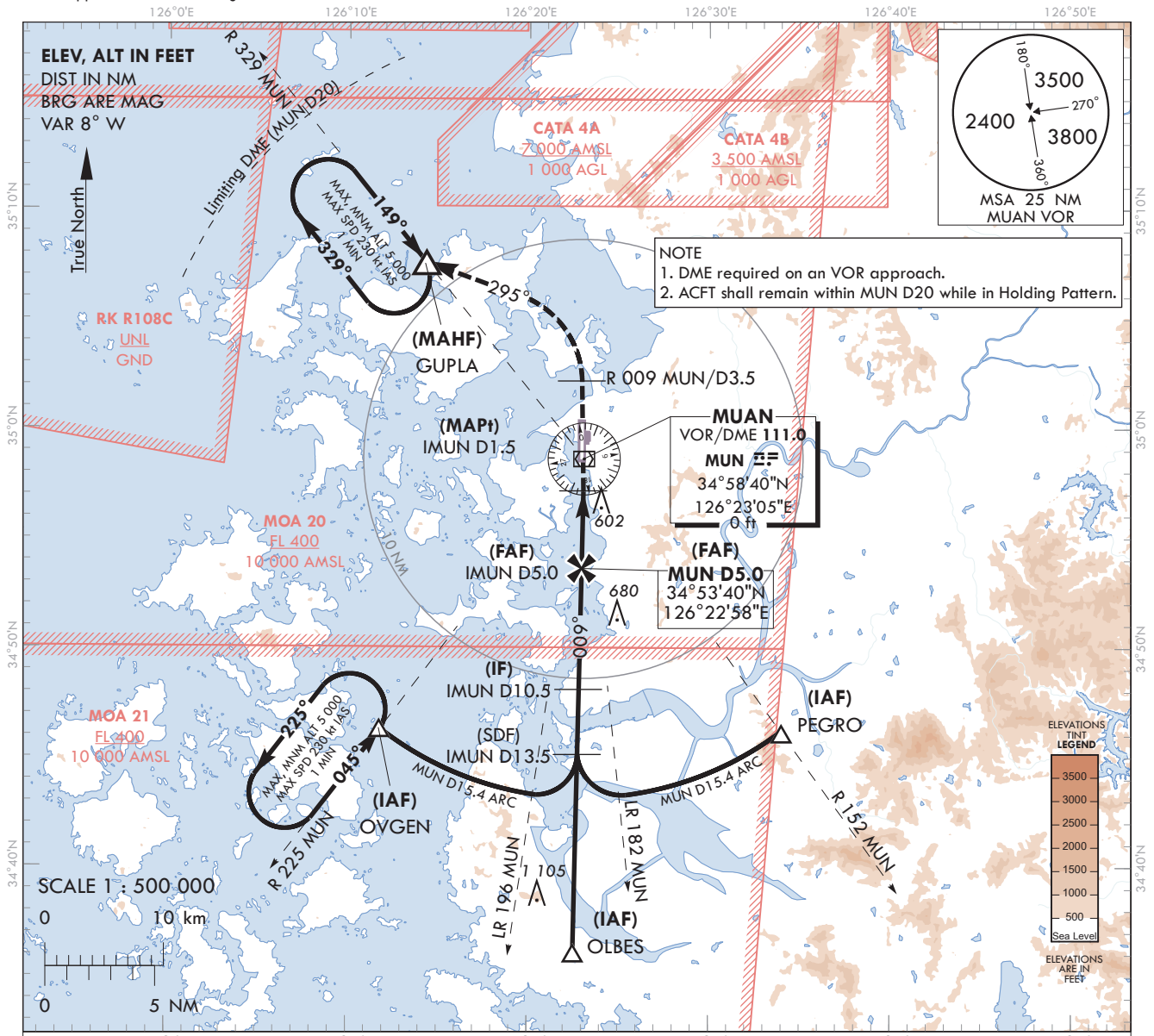
**AERODROME ELEV 51 ft**  
HEIGHTS RELATED TO  
THR RWY 01 - ELEV 32 ft

GWANGJU APP	120.475	130.0
	228.9	265.5
MUAN TWR	118.25	118.85

**MUAN/Muan Intl(RKJB)**

**VOR RWY 01**

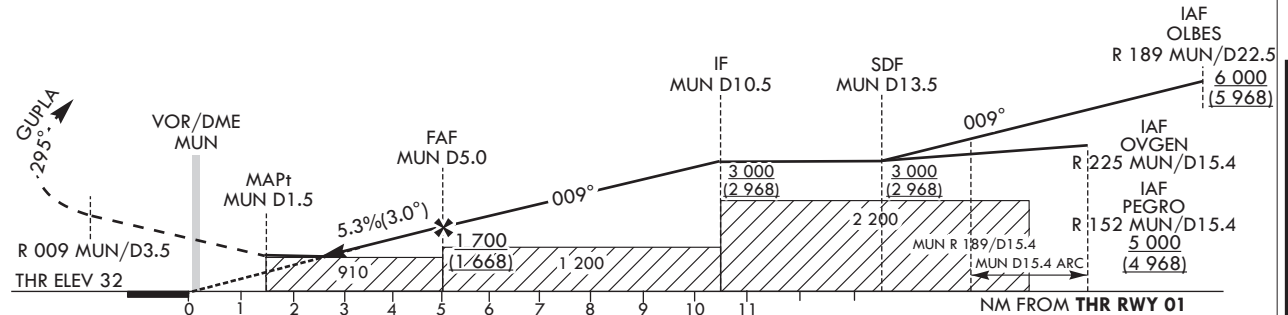
Note : Approach under ICAO Flight Procedure.



RECOMMENDED PROFILE	DME MUN	4	3	2.5
Final Approach Gradient 5.26%, 320 ft/NM	ALT(HGT)	1 381 (1 349)	1 061 (1 029)	910 (878)

**MISSED APPROACH**  
Climb to R 009 MUN/D3.5, then turn left HDG 295° to GUPLA and Hold at 5 000 ft.

TRANSITION ALT 14 000  
TRANSITION LVL FL 140



CATEGORY	MDA/(MDH)	A	B	C	D	Rate of descent					
						Knots	60	90	120	150	180
STA	FULL	910 (878)	3 300m			V/V	320	480	640	799	959
	ALS INOP		4 000m			fpm					

\* Circling Not authorized.  
\* Timing Not authorized for defining MAPt.

Change : Information of profile view.

MUAN/Muan Intl(RKJB)  
VOR RWY 01

AERONAUTICAL DATA TABULATION

VOR Approach to RWY 01 from OVGEN, OLBES or PEGRO			
Fix/point		Coordinates	
OVGEN(IAF)	R 225 MUN /15.4 NM MUN	34°46'22.2"N	126°11'47.9"E
OLBES(IAF)	R 189 MUN /22.5 NM MUN	34°36'08.1"N	126°22'32.0"E
PEGRO(IAF)	R 152 MUN /15.4 NM MUN	34°46'09.0"N	126°34'02.1"E
D13.5 MUN(SDF)	R 189 MUN/13.5 NM MUN	34°45'08.9"N	126°22'45.3"E
D10.5 MUN(IF)	R 189 MUN/10.5 NM MUN	34°48'09.1"N	126°22'49.8"E
D5.0 MUN(FAF)	R 189 MUN/5.0 NM MUN	34°53'39.6"N	126°22'57.9"E
D1.5 MUN(MAPt)	R 189 MUN/1.5 NM MUN	34°57'09.9"N	126°23'03.1"E
MUN VOR/DME		34°58'40.0"N	126°23'05.4"E
THR RWY 01	Final approach descent angle 3.01°	34°58'43.64"N	126°22'58.45"E
D3.5 MUN	R 009 MUN /3.5 NM MUN	35°02'10.2"N	126°22'57.2"E
GUPLA	HDG 294.81/11.5 NM MUN	35°07'37.8"N	126°14'18.1"E



**INSTRUMENT  
APPROACH  
CHART - ICAO**

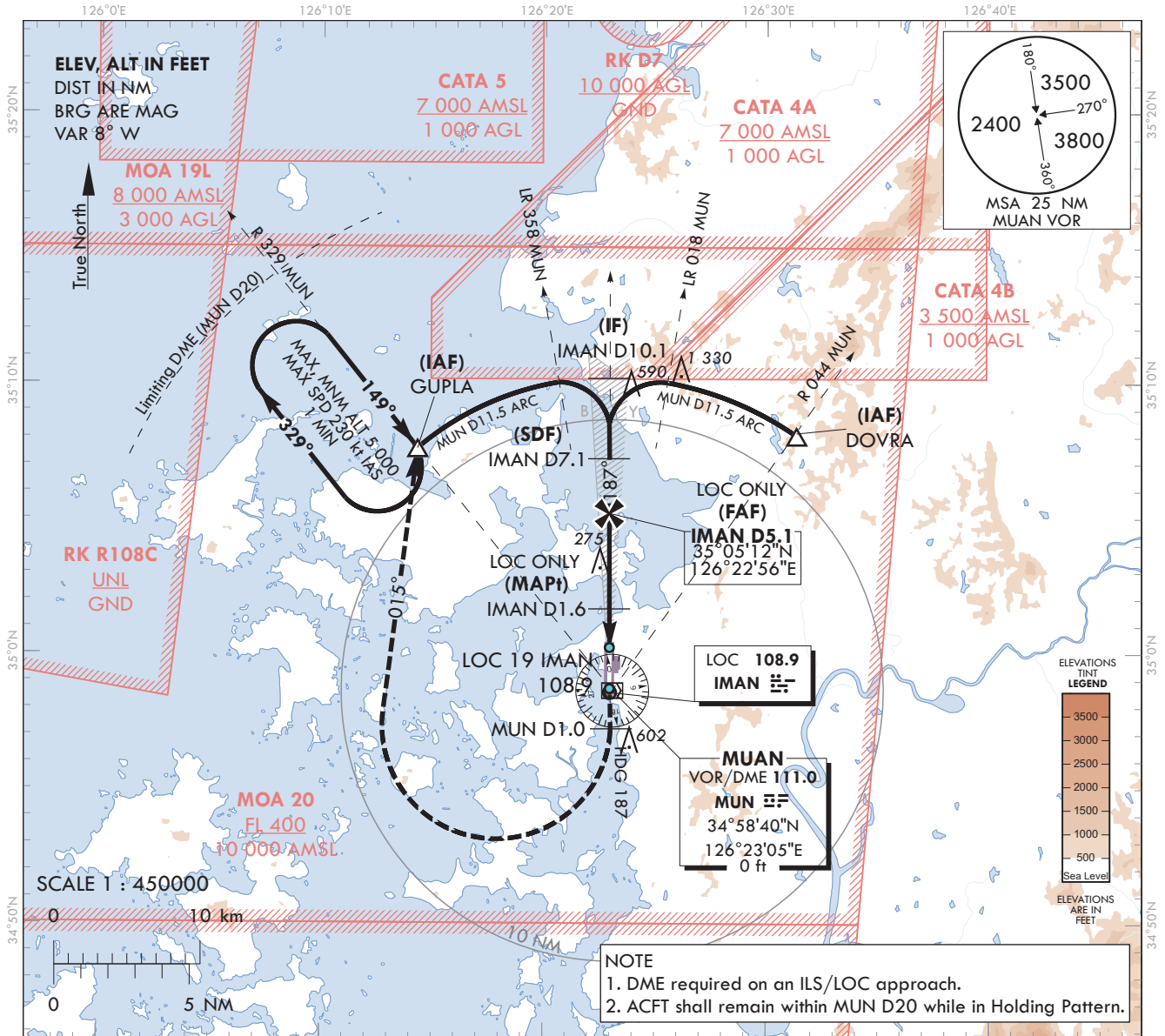
**AERODROME ELEV 51 ft**  
HEIGHTS RELATED TO  
THR RWY 19 - ELEV 51 ft

GWANGJU APP	120.475	130.0
	228.9	265.5
MUAN TWR	118.25	118.85

**MUAN/Muan Intl(RKJB)**

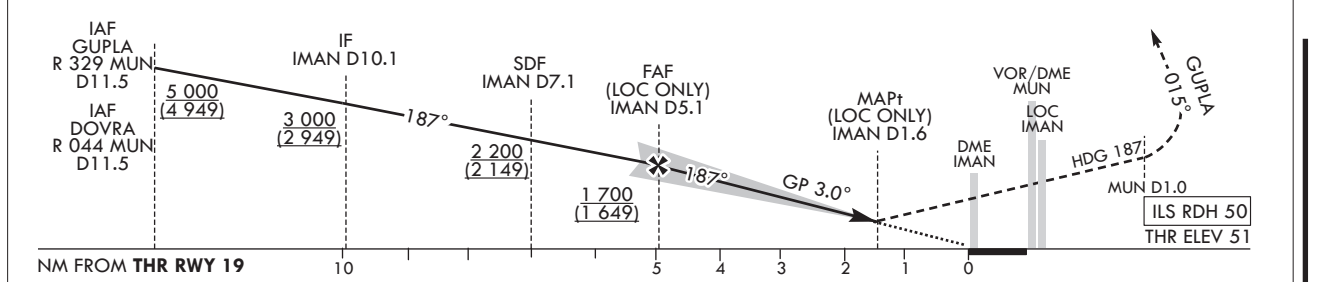
**ILS Y or LOC Y RWY 19**

Note : Approach under ICAO Flight Procedure.



RECOMMENDED PROFILE(LOC ONLY)	DME IMAN	5	4	3	2	1.7	<b>MISSED APPROACH</b> Climb on HDG 187° to MUN D1.0 then turn right HDG 015° to GUPLA and Hold at 5 000 ft.
Final Approach Gradient 5.31%, 323 ft/NM	ALT (HGT)	1 660 (1 609)	1 338 (1 287)	1 015 (964)	692 (641)	590 (539)	

TRANSITION ALT 14 000  
TRANSITION LVL FL 140



CATEGORY		DA(DH)/MDA(MDH)	A	B	C	D								
STA	CAT-I (CG 2.5%)	FULL	414	1 200 m				Rate of descent	Knots	60	90	120	150	180
		ALS INOP	(363)	1 900 m										
	CAT-I (CG 5.0%)	FULL	251	RVR 550 m, VIS 800 m										
		ALS INOP	(200)	1 200 m										
LOC	FULL	590	2 000 m				* Timing Not authorized for defining MAPt. * Circling Not authorized.							
	ALS INOP	(539)	2 700 m											

Change : Information of profile view.

MUAN/Muan Intl(RKJB)  
ILS Y or LOC Y RWY 19

AERONAUTICAL DATA TABULATION

ILS Y or LOC Y Approach to RWY 19 from GUPLA or DOVRA			
Fix/point		Coordinates	
GUPLA(IAF)	R 329 MUN /11.5 NM MUN	35°07'37.8"N	126°14'18.1"E
DOVRA(IAF)	R 044 MUN /11.5 NM MUN	35°07'57.8"N	126°31'22.0"E
D10.1 IMAN(IF)	BRG 187.14°/10.14 NM IMAN	35°10'11.0"N	126°22'53.2"E
D7.1 IMAN(SDF)	BRG 187.14°/7.14 NM IMAN	35°07'13.4"N	126°22'54.7"E
D5.1 IMAN(FAF LOC ONLY)	BRG 187.14°/5.12 NM IMAN	35°05'12.3"N	126°22'55.7"E
D1.6 IMAN(MAPt LOC ONLY)	BRG 187.14°/1.60 NM IMAN	35°01'40.5"N	126°22'57.2"E
THR RWY 19	Final approach descent angle 3.04°(LOC ONLY)	35°00'14.49"N	126°22'57.82"E
IMAN DME		35°00'04.3"N	126°22'53.3"E
IMAN LOC		34°58'35.0"N	126°22'58.5"E
MUN VOR/DME		34°58'40.0"N	126°23'05.4"E
D1.0 MUN	HDG 187		-
GUPLA	HDG 015/11.5 NM MUN	35°07'37.8"N	126°14'18.1"E

**INSTRUMENT  
APPROACH  
CHART - ICAO**

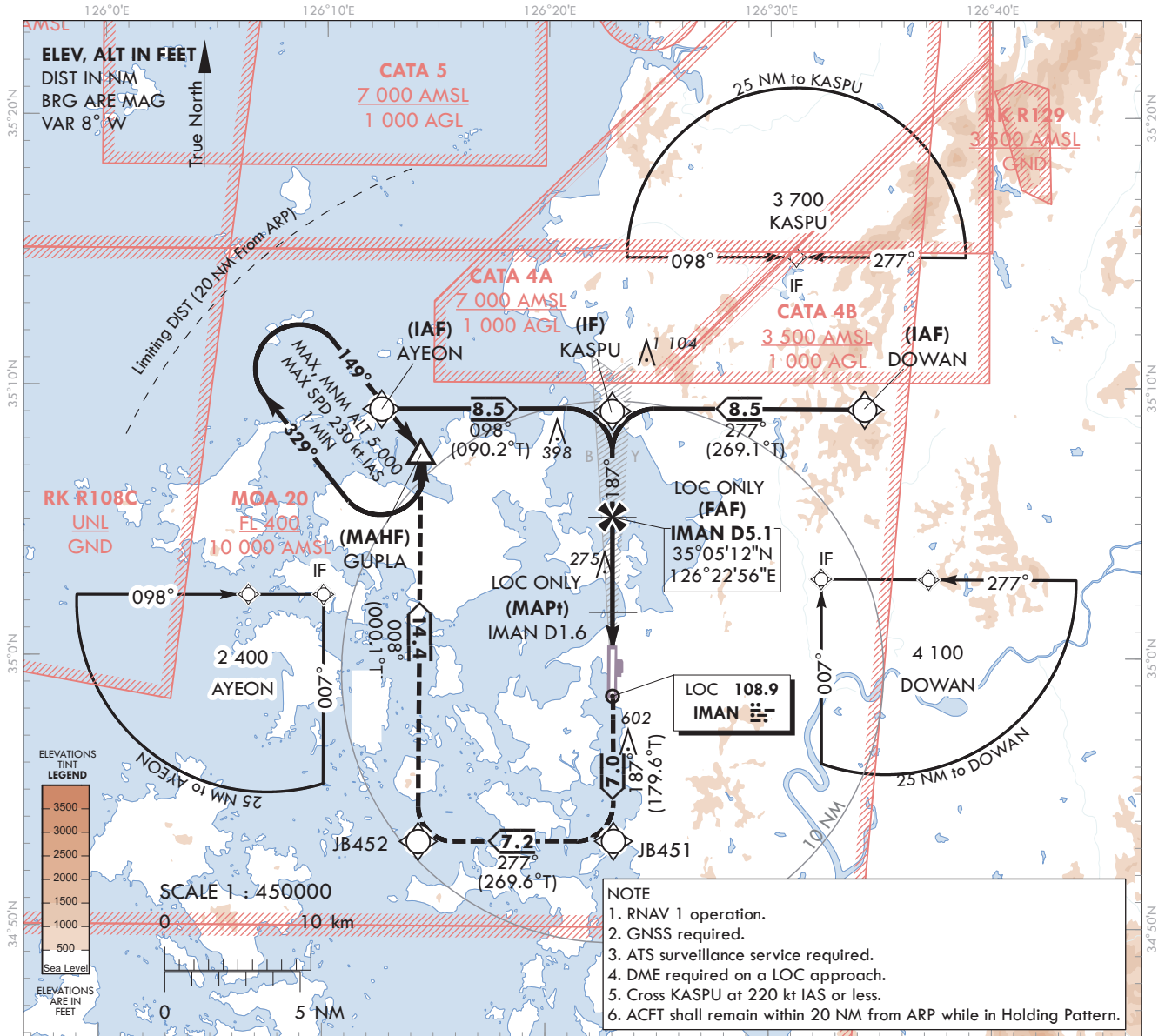
**AERODROME ELEV 51 ft**  
HEIGHTS RELATED TO  
THR RWY 19 - ELEV 51 ft

GWANGJU APP	120.475	130.0
	228.9	265.5
MUAN TWR	118.25	118.85

**MUAN/Muan Intl(RKJB)**

**ILS Z or LOC Z RWY 19**

Note : Approach under ICAO Flight Procedure.



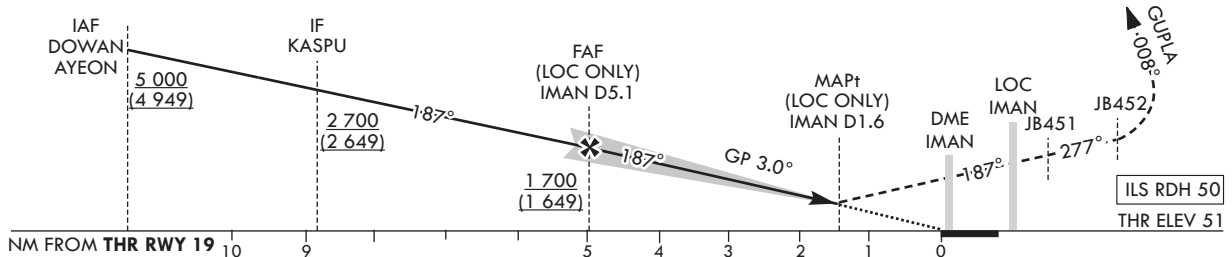
**MISSED APPROACH**

Climb to 5 000 ft on track of 187° to JB451,  
RIGHT turn on track of 277° to JB452,  
then RIGHT turn on track of 008° to GUPLA.  
Hold as published.

RECOMMENDED PROFILE(LOC ONLY)	DME IMAN	5	4	3	2	1.7
Final Approach Gradient 5.31%, 323 ft/NM	ALT(HGT)	1 660 (1 609)	1 338 (1 287)	1 015 (964)	692 (641)	590 (539)

\* Missed approach turns are limited to maximum of 230 kt IAS.

TRANSITION ALT 14 000  
TRANSITION LVL FL 140



CATEGORY	DA(DH)/MDA(MDH)	A	B	C	D	Rate of descent						
						Knots	60	90	120	150	180	
STA	CAT-I (CG 2.5%)	FULL	414	1 200 m			V/V fpm	318	478	637	796	955
		ALS INOP	(363)	1 900 m								
	CAT-I (CG 5.0%)	FULL	251	RVR 550 m, VIS 800 m								
		ALS INOP	(200)	1 200 m								
LOC	FULL	590	2 000 m			* Timing Not authorized for defining MAPt. * Circling Not authorized.						
	ALS INOP	(539)	2 700 m									

Change : Information of profile view.

MUAN/Muan Intl(RKJB)  
ILS Z or LOC Z RWY 19

AERONAUTICAL DATA TABULATION

ILS Z or LOC Z Approach to RWY 19 from AYEON or DOWAN		
Fix/point	Coordinates	
AYEON(IAF)	35°09'10.2"N	126°12'32.1"E
DOWAN(IAF)	35°09'16.1"N	126°33'16.0"E
KASPU(IF)	35°09'07.5"N	126°22'54.1"E
D5.1 IMAN(FAF LOC ONLY)	BRG 187.14°/5.12 NM IMAN	35°05'12.3"N 126°22'55.7"E
D1.6 IMAN(MAPt LOC ONLY)	BRG 187.14°/1.60 NM IMAN	35°01'40.5"N 126°22'57.2"E
THR RWY 19	Final approach descent angle 3.04° (LOC ONLY)	35°00'14.49"N 126°22'57.82"E
IMAN DME	35°00'04.3"N	126°22'53.3"E
IMAN LOC	34°58'35.0"N	126°22'58.5"E
JB451	34°53'13.8"N	126°23'01.0"E
JB452	34°53'10.9"N	126°14'17.1"E
GUPLA	35°07'37.8"N	126°14'18.1"E

**INSTRUMENT  
APPROACH  
CHART - ICAO**

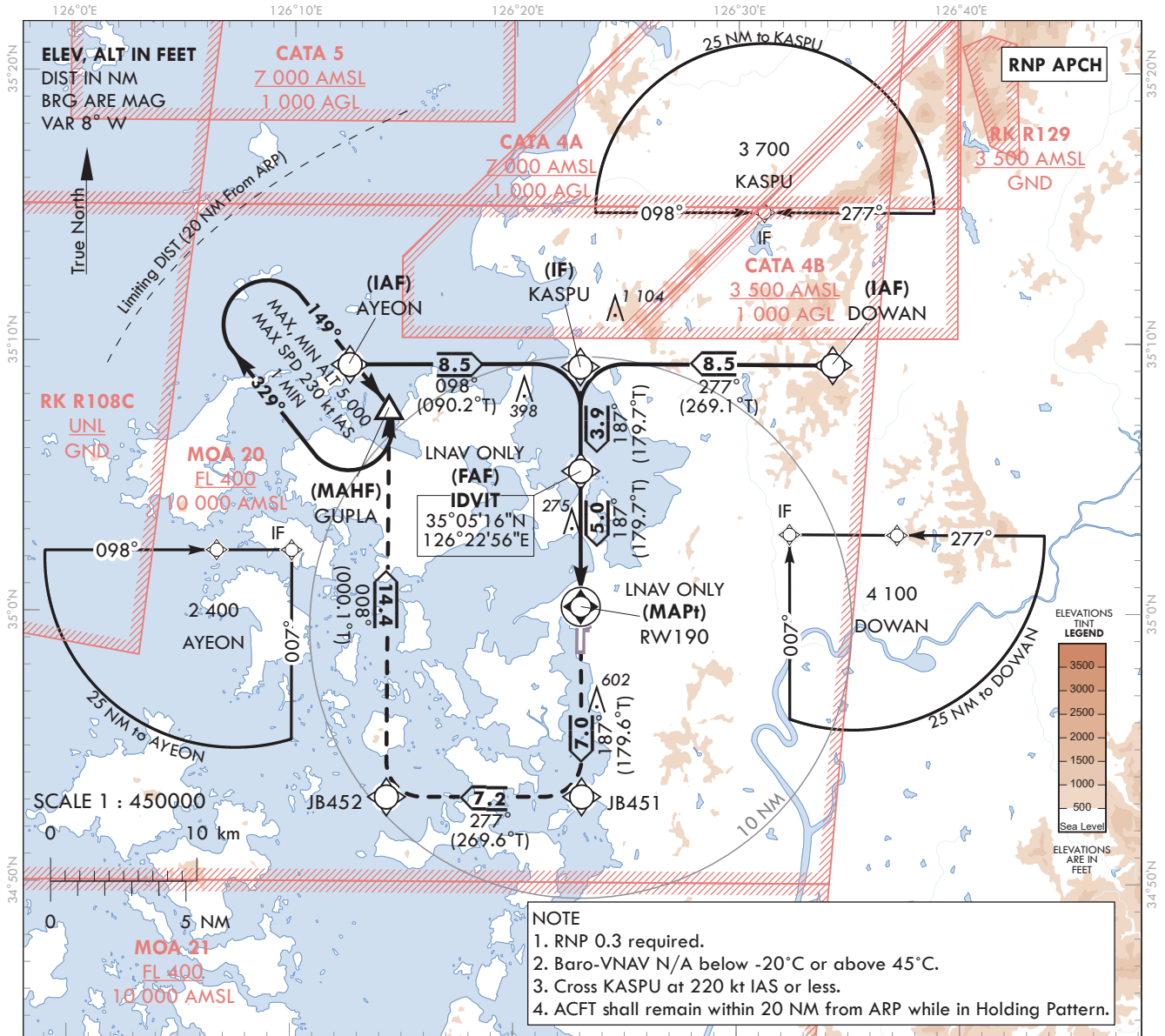
**AERODROME ELEV 51 ft**  
HEIGHTS RELATED TO  
THR RWY 19 - ELEV 51 ft

GWANGJU APP	120.475	130.0
	228.9	265.5
MUAN TWR	118.25	118.85

**MUAN/Muan Intl(RKJB)**

**RNP RWY 19**

Note : Approach under ICAO Flight Procedure.



- NOTE**
1. RNP 0.3 required.
  2. Baro-VNAV N/A below -20°C or above 45°C.
  3. Cross KASPU at 220 kt IAS or less.
  4. ACFT shall remain within 20 NM from ARP while in Holding Pattern.

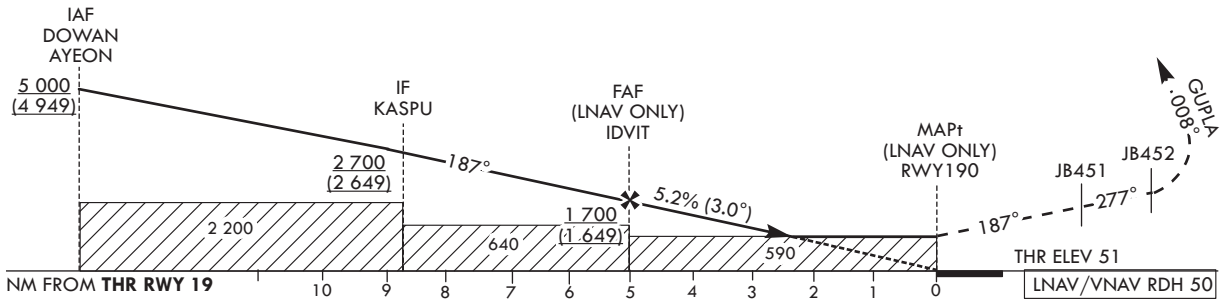
TRANSITION ALT 14 000  
TRANSITION LVL FL 140

**MISSED APPROACH**

Climb to 5 000 ft on track of 187° to JB451, RIGHT turn on track of 277° to JB452, Then RIGHT turn on track of 008° to GUPLA.

Hold as published.

\* Missed approach turns are limited to maximum of 230 kt IAS.



CATEGORY		DA(H)/MDA(H)	A	B	C	D	Knots					
STA	LNAV/VNAV	FULL	460	1 200 m			Rate of descent V/V fpm	60	90	120	150	180
		ALS INOP	(409)	1 900 m				319	478	637	797	957
	LNAV	FULL	590	1 700 m				* Timing Not authorized for defining MAPt. * Circling Not authorized.				
		ALS INOP	(539)	2 400 m								

Change : Information of profile view.

AERONAUTICAL DATA TABULATION

Instrument Approach Procedure Coding Tables

RNP RWY 19 - via DOWAN to KASPU(IF)

Serial Number	Path Descriptor	Waypoint Identifier	Fly-over	Course/Track °M(T)	Distance (NM)	Turn direction	Altitude (ft)	Speed (kt)	Coordinates	VPA/RDH	Navigation specification	Remarks
001	IF	DOWAN	-	-	-	-	+5 000	-	35°09'16.1"N 126°33'16.0"E	-	RNP APCH	IAF
002	TF	KASPU	-	277(269.1)	8.5	-	+2 700	-220	35°09'07.5"N 126°22'54.1"E	-	RNP APCH	IF

RNP RWY 19 - via AYEON to KASPU(IF)

Serial Number	Path Descriptor	Waypoint Identifier	Fly-over	Course/Track °M(T)	Distance (NM)	Turn direction	Altitude (ft)	Speed (kt)	Coordinates	VPA/RDH	Navigation specification	Remarks
001	IF	AYEON	-	-	-	-	+5 000	-	35°09'10.2"N 126°12'32.1"E	-	RNP APCH	IAF
002	TF	KASPU	-	098(090.2)	8.5	-	+2 700	-220	35°09'07.5"N 126°22'54.1"E	-	RNP APCH	IF

RNP RWY 19 - via KASPU(IF) to GUPLA(MAHF)

Serial Number	Path Descriptor	Waypoint Identifier	Fly-over	Course/Track °M(T)	Distance (NM)	Turn direction	Altitude (ft)	Speed (kt)	Coordinates	VPA/RDH	Navigation specification	Remarks
002	TF	KASPU	-	-	-	-	+2 700	-220	35°09'07.5"N 126°22'54.1"E	-	RNP APCH	IF
003	TF	IDVIT	-	187(179.7)	3.9	-	+1 700	-	35°05'15.9"N 126°22'55.7"E	-	RNP APCH	FAF
004	TF	RW190	Y	187(179.7)	5.0	-	+590	-	35°00'14.49"N 126°22'57.82"E	-3.00/50	RNP APCH	MAPt
005	TF	JB451	-	187(179.6)	7.0	-	-	-230	34°53'13.8"N 126°23'01.0"E	-	RNP APCH	-
006	TF	JB452	-	277(269.6)	7.2	-	-	-230	34°53'10.9"N 126°14'17.1"E	-	RNP APCH	-
007	TF	GUPLA	Y	008(000.1)	14.4	-	-	-230	35°07'37.8"N 126°14'18.1"E	-	RNP APCH	-
008	HM	GUPLA	Y	149(141.1)	-	R	@5 000	-230	35°07'37.8"N 126°14'18.1"E	-	RNP APCH	<sup>1</sup> MIN (Outbound timing)

**INSTRUMENT  
APPROACH  
CHART - ICAO**

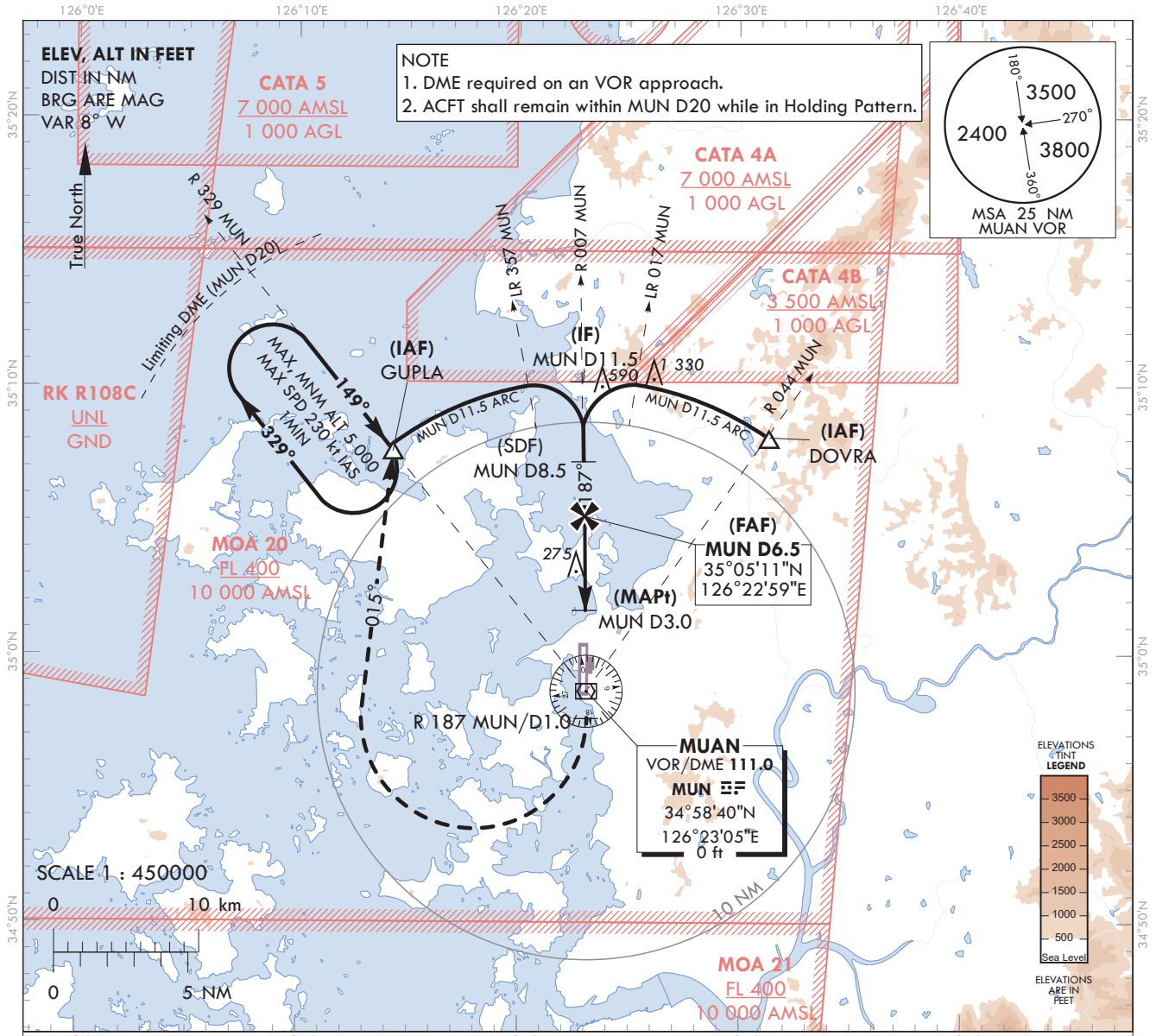
**AERODROME ELEV 51 ft**  
HEIGHTS RELATED TO AD ELEV

GWANGJU APP	120.475	130.0
	228.9	265.5
MUAN TWR	118.25	118.85

**MUAN/Muan Intl(RKJB)**

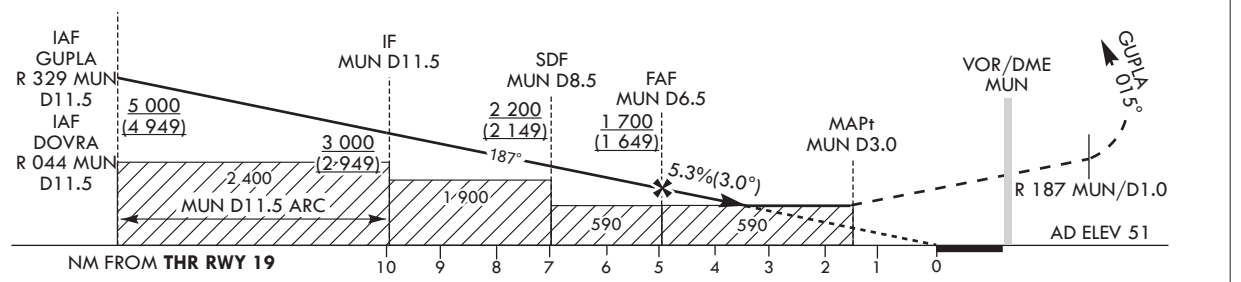
**VOR RWY 19**

Note : Approach under ICAO Flight Procedure.



RECOMMENDED PROFILE	DME MUN	6	5	4	3.1	MISSED APPROACH
Final Approach Gradient 5.35%, 325 ft/NM	ALT(HGT)	1 538 (1 487)	1 214 (1 163)	889 (838)	590 (539)	Climb on R 187 MUN/D1.0, then turn right HDG 015° to GUPLA and Hold at 5 000 ft.

TRANSITION ALT 14 000  
TRANSITION LVL FL 140



CATEGORY	MDA/(MDH)	A	B	C	D	Rate of descent	Knots	60	90	120	150	180	
							V/V fpm	325	487	649	811	974	
STA	FULL	590	2 100 m				* Circling Not authorized. * Timing Not authorized for defining the MAPt.						
	ALS INOP	(539)	2 800 m										

Change : Information of profile view.

MUAN/Muan Intl(RKJB)  
VOR RWY 19

AERONAUTICAL DATA TABULATION

VOR Approach to RWY 19 from GUPLA or DOVRA			
Fix/point		Coordinates	
GUPLA(IAF)	R 329 MUN /11.5 NM MUN	35°07'37.8"N	126°14'18.1"E
DOVRA(IAF)	R 044 MUN /11.5 NM MUN	35°07'57.8"N	126°31'22.0"E
D11.5 MUN(IF)	R 007 MUN/11.5 NM MUN	35°10'11.0"N	126°22'53.2"E
D8.5 MUN(SDF)	R 007 MUN/8.5 NM MUN	35°07'13.6"N	126°22'56.3"E
D6.5 MUN(FAF)	R 007 MUN/6.5 NM MUN	35°05'10.6"N	126°22'59.5"E
D3.0 MUN(MAPt)	R 007 MUN/3.0 NM MUN	35°01'40.2"N	126°23'02.2"E
THR RWY 19	Final approach descent angle 3.06°	35°00'14.49"N	126°22'57.82"E
MUN VOR/DME		34°58'40.0"N	126°23'05.4"E
D1.0 MUN	R 187 MUN /1.0 NM MUN	34°57'39.9"N	126°23'06.3"E
GUPLA	HDG 014.75/11.5 NM MUN	35°07'37.8"N	126°14'18.1"E